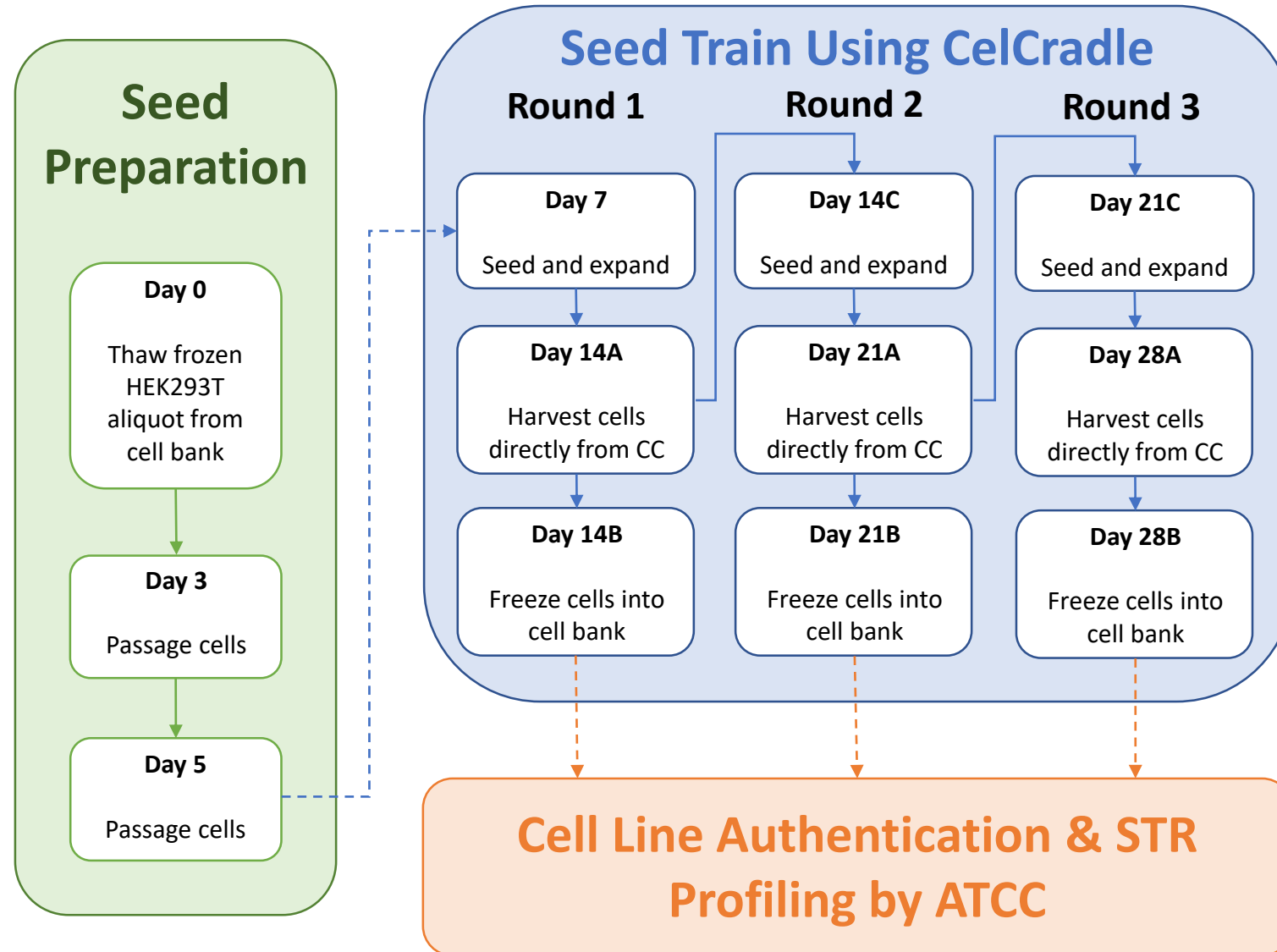




**Using TideMotion Technology To Perform  
HEK293T Seed Train**

# PROCESS FLOW DIAGRAM

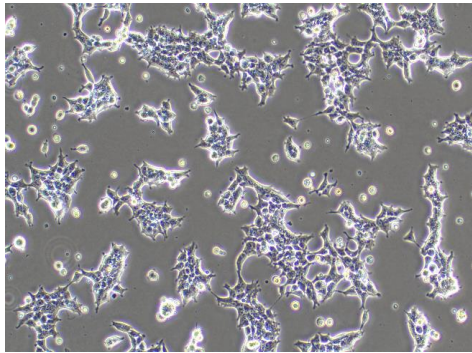


# Cell Morphology and STR Profiling

Cells harvested directly from each round of CelCradle Seed Train were seeded onto 2D flask to check for morphology and send for third party cell line authentication

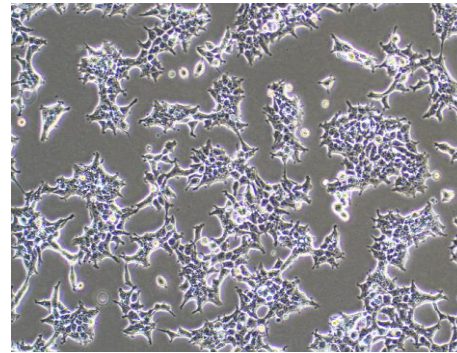
## Round #1 – Passage 18

STRA10130



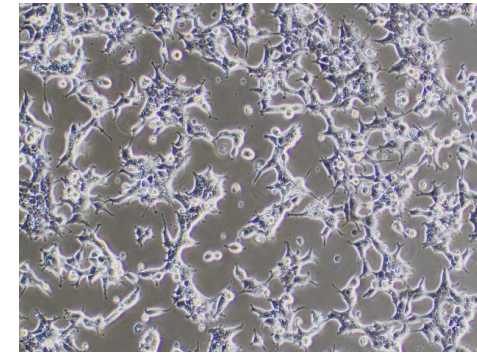
## Round #2 – Passage 19

STRA10129



## Round #3 – Passage 20

STRA10128



% Match	ATCC® Cat. No.	Designation	D5S818	D13S317	D7S820	D16S539	vWA	THO1	AMEL	TPOX	CSF1PO
100	STRA10130	HEK293T #1	8,9	12,14	11	9,13	16,19	7,9,3	X	11	11,12
100	CRL-3216	293T; Embryonic Kidney Cells; Human (Homo sapiens)	8,9	12,14	11	9,13	16,19	7,9,3	X	11	11,12

% Match	ATCC® Cat. No.	Designation	D5S818	D13S317	D7S820	D16S539	vWA	THO1	AMEL	TPOX	CSF1PO
100	STRA10129	HEK293T #2	8,9	12,14	11	9,13	16,19	7,9,3	X	11	11,12
100	CRL-3216	293T; Embryonic Kidney Cells; Human (Homo sapiens)	8,9	12,14	11	9,13	16,19	7,9,3	X	11	11,12

% Match	ATCC® Cat. No.	Designation	D5S818	D13S317	D7S820	D16S539	vWA	THO1	AMEL	TPOX	CSF1PO
100	STRA10128	HEK293T #3	8,9	12,14	11	9,13	16,19	7,9,3	X	11	11,12
100	CRL-3216	293T; Embryonic Kidney Cells; Human (Homo sapiens)	8,9	12,14	11	9,13	16,19	7,9,3	X	11	11,12